

## Sales Team Coating Technology

### Your Contacts

#### Werner Hartwig

Field Sales Manager

Fon +49 (7142) 583-251

Mobil +49 151 23621246

E-Mail [werner.hartwig@elringklinger.com](mailto:werner.hartwig@elringklinger.com)



#### Andreas Bernhard-Lück

Field Sales Manager

Fon ++49 (7142) 583-257

Mobil +49 173 9834446

E-Mail [andreas.bernhard-lueck@elringklinger.com](mailto:andreas.bernhard-lueck@elringklinger.com)



#### Michael Böttigheimer

Global Segment Manager

Fon +49 (7142) 583-194

E-Mail [michael.boettigheimer@elringklinger.com](mailto:michael.boettigheimer@elringklinger.com)



How to find us  
Global. Regional. Local.



## ElringKlinger Kunststofftechnik GmbH

Your specialist in Engineered Plastics

Etzelstraße 10  
D-74321 Bietigheim-Bissingen

Fon +49 7142 583-0

Fax +49 7142 583-200

E-Mail [mech-engineering@elringklinger.com](mailto:mech-engineering@elringklinger.com)

[www.elringklinger-engineered-plastics.com](http://www.elringklinger-engineered-plastics.com)



<http://ek-kt.de/coating-technology>

The information is non-binding and does not represent any warranted characteristics.  
Any claims for compensation based on this information cannot be accepted.  
No guarantee for printing errors.

## Coating Technology



ElringKlinger Kunststofftechnik  
We take you ahead!

**elringklinger**  
Engineered Plastics

## Our core competencies for Coating Technology

## Manufacturing to the highest standards

## Our material



**Needle Valve Seal**  
for sealing paint and air  
including guide ring



**Diaphragm**  
for valves and pumps



**Tubes**  
with color stripes  
(also conductive  
stripes possible)



**Complete Piston**  
including multi  
functions

### Our experience:

Complete production process from semi-finished product to finished product.

- Material development and compounding in-house
- Extrusion
- Injection molding
- Machining
- Clean room production
- Hygienic design (CIP, SIP)
- Production of complex assemblies

Certificates:

- ISO 9001
- GMP
- DIN EN ISO 14001
- EN ISO 13485
- ISO 50001



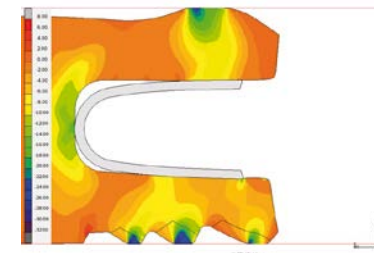
Developing solutions in customer dialog

Painting technology poses special challenges for seals and construction parts. On the one hand, many paint fluids are very abrasive, on the other hand, solvents limit the choice of materials. Our know-how has resulted in various seal designs that, together with the right plastic, deliver the maximum performance that our customers expect.

FE calculations have resulted in completely new designs for a large number of components. We are happy to inspire you with a solution.

### High-performance plastics:

- PTFE
- PFA
- FEP
- PEEK
- Moldflon®-materials



FE-assisted product development