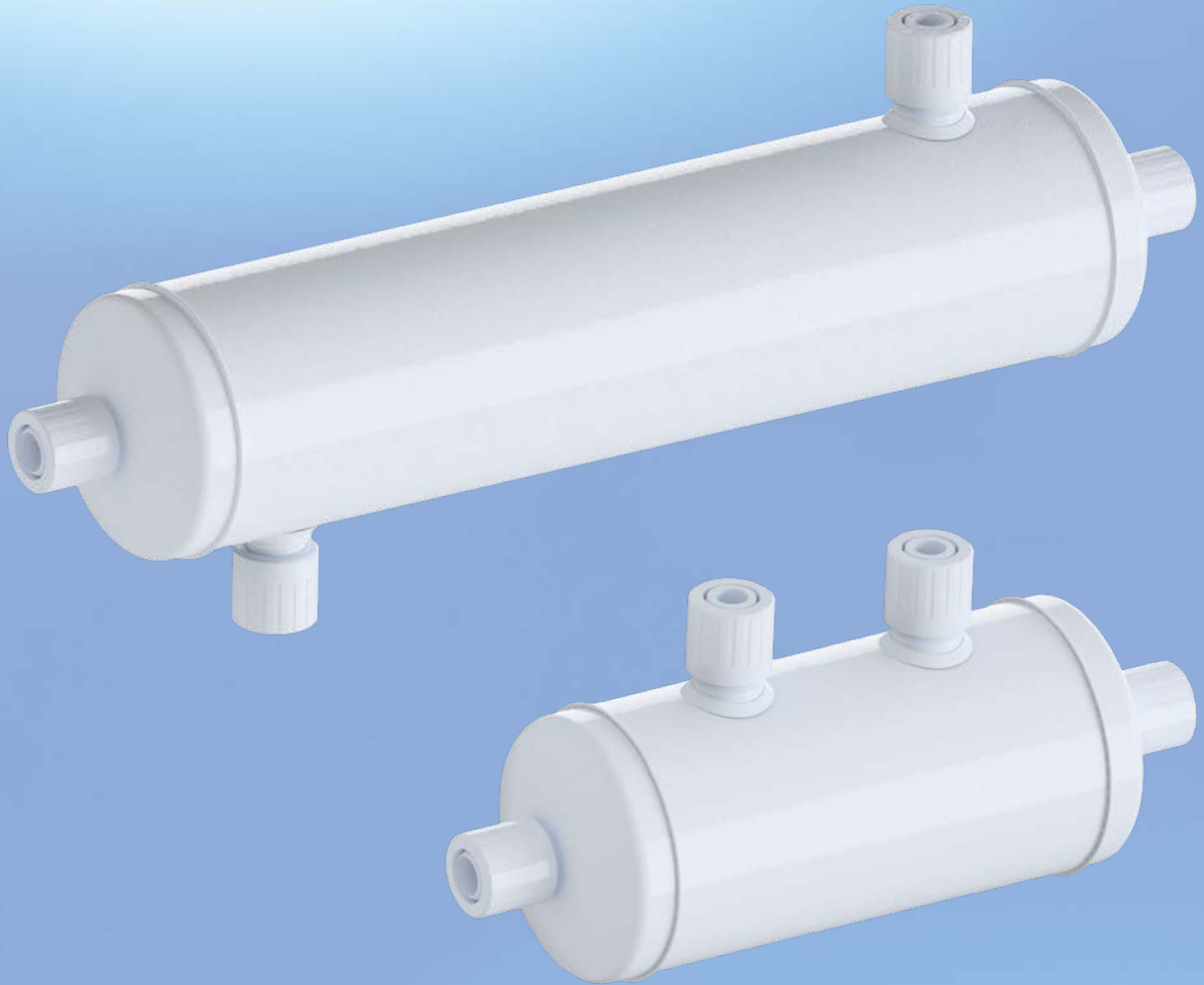


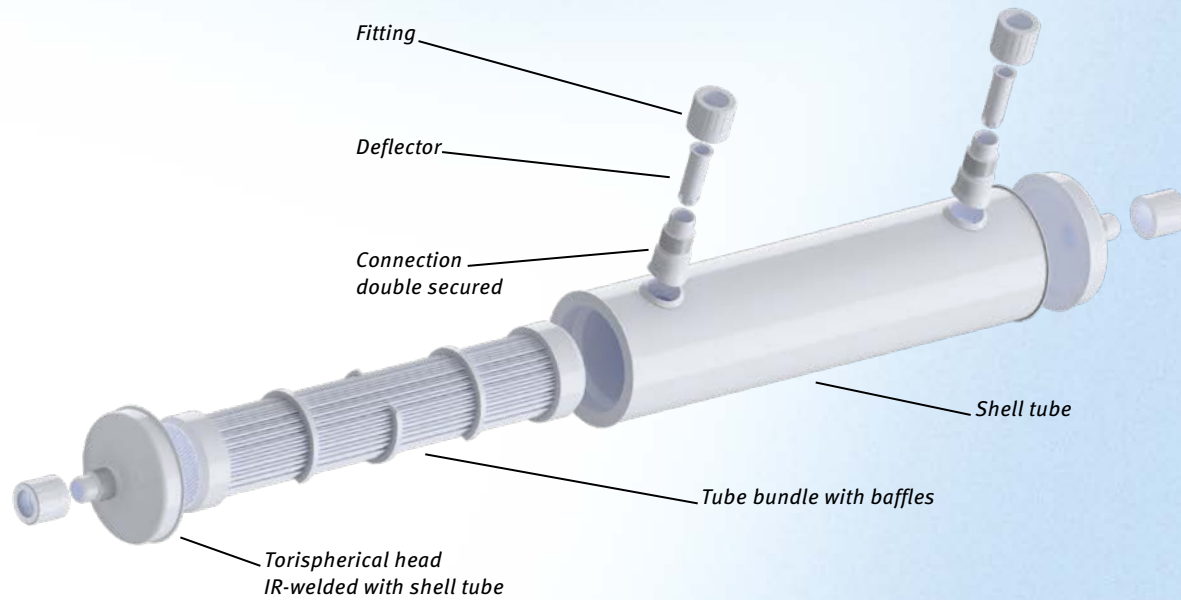
Thermo-X™

Innovative Shell and Tube Heat Exchanger

Highest Thermal Efficiency for Ideal Heat Transfer



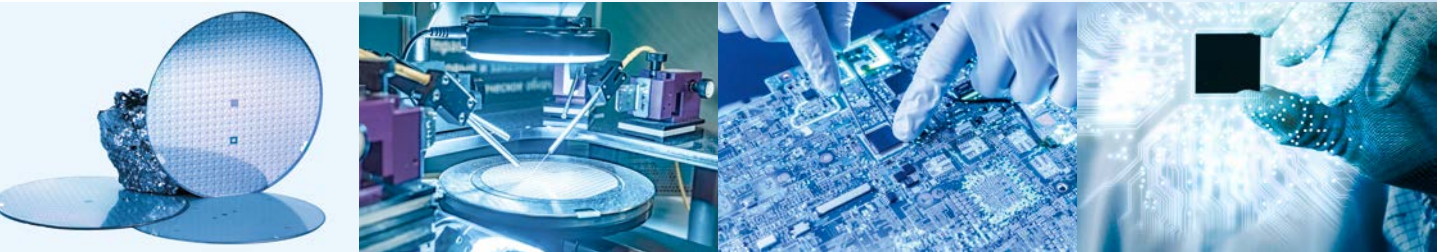
Design



Benefits & Features

- Universal chemical resistance
- Higher corrosion resistant than most metals
- Precise temperature control in demanding environments
- Suitable for high purity applications (e.g. medical, laboratory, analytics)
- Easy-to-Assemble desing
- Long lifetime. More durable than heat exchangers made of glass
- Designed according technical guidelines of ASME
- Perfect fit for minimum space requirements
- Short delivery times

Highest Thermal Efficiency for Ideal Heat Transfer



Thermo-X™

Innovative Shell and Tube Heat Exchanger

Temperature Control for High Purity Applications

Our Thermo-X™ shell and tube heat exchanger for demanding processes which require precise managed fluid temperature combining the highest level of purity. The Thermo-X™ shell and tube heat exchanger made from PFA is the best choice for controlled heating or cooling of ultrapure water, corrosive chemicals and acids which are used in pharmaceutical applications, electronic industry as well as in semiconductor range.

Depending on the application and the process data (temperatures, used medias) the material Moldflon™-PVDF presents a cost efficient alternative to Moldflon™-PFA.

Specifications

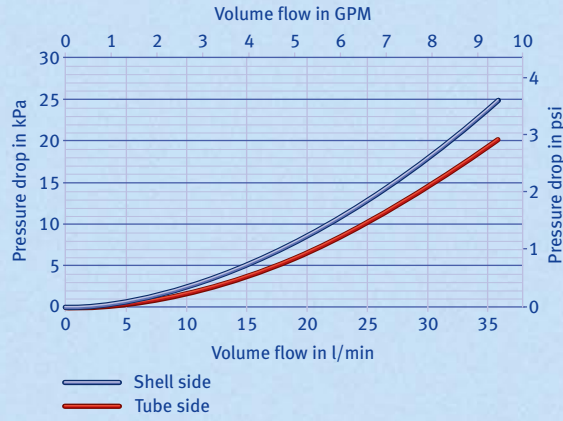
- Shell and tube heat exchanger made of pure Moldflon™-PFA or Moldflon™-PVDF
- Available in two versions with 0.3m² [3.2ft²] and 0.8m² [8.6ft²] heat exchange area
- Operation in counter flow and parallel flow possible
- Available with Flare ¾" or SUPER-300 type PILLAR fitting™*
- The 0.3m² [3.2ft²]-version is available with connections on same side (U-shape)
- The 0.8 m² [8.6ft²]-version is available in U-shape as well as in S-Shape (one connection on the opposite side)

Applications

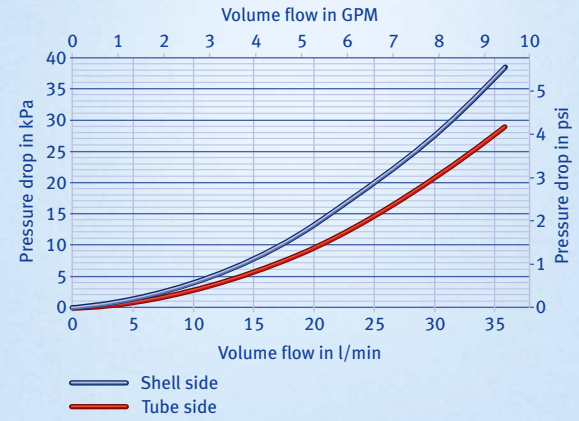
- Laboratory application: heating or cooling of biochemical fluids
- Ultra-pure water application
- Photochemical industry
- Semiconductor industry
- Thermo Management

Performance

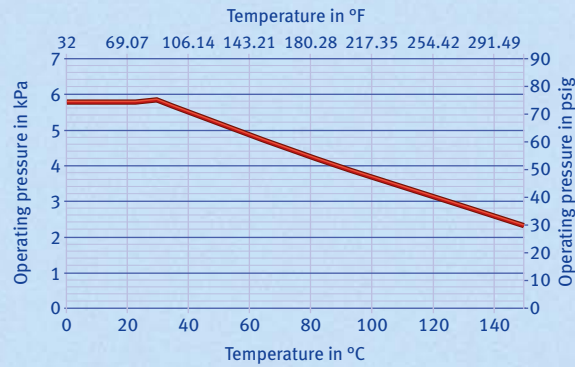
Pressure drop for heat exchanger with 0.8m² [8.6ft²]



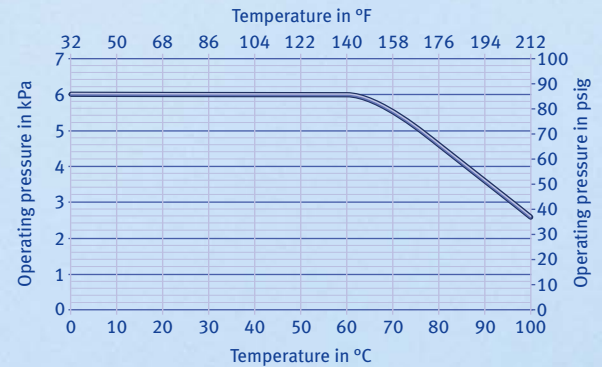
Pressure drop for heat exchanger with 0.3m² [3.2ft²]



Operating pressure range for Moldflon™-PFA

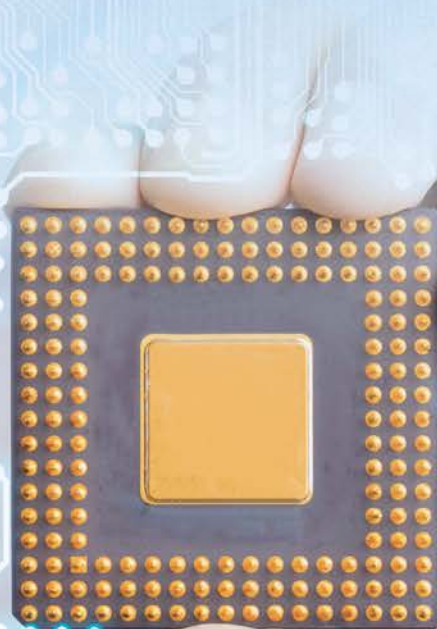
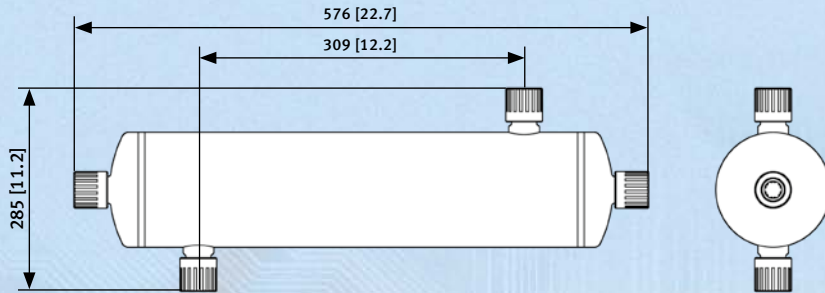
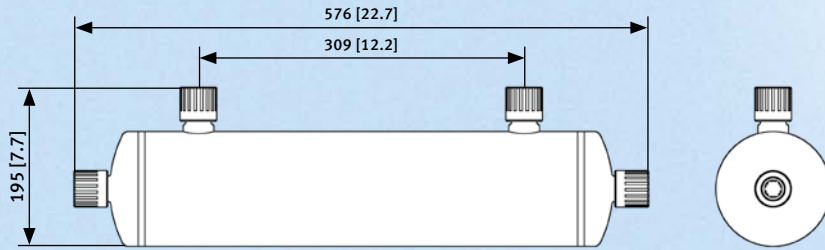
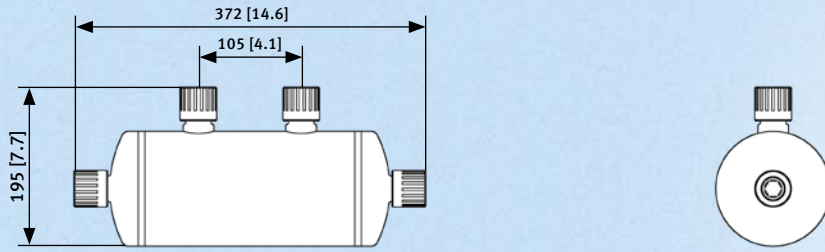


Operating pressure range for Moldflon™-PVDF



For further technical data on heat exchangers, please request our technical data sheets at sales.ekt@elringklinger.com.

Dimensions in mm [Inch]



For More Information:

Mönchengladbach plant | Hocksteiner Weg 40 | D-41189 Mönchengladbach
Phone +49 2166 9590-0 | Fax +49 2166 9590-55 | sales.ekt@elringklinger.com | www.elringklinger-kunststoff.de

Headquarters and other ElringKlinger Kunststofftechnik GmbH plants

ElringKlinger Kunststofftechnik GmbH | Etzelstraße 10 | D-74321 Bietigheim-Bissingen
Phone +49 7142 583-0 | Fax +49 7142 583-200 | sales.ekt@elringklinger.com | www.elringklinger-kunststoff.de

Heidenheim plant | Badenbergsstraße 15 | D-89520 Heidenheim/Germany
Phone +49 7321 9641-0 | Fax +49 7321 9641-24 | sales.ekt@elringklinger.com | www.elringklinger-kunststoff.de

ElringKlinger Engineered Plastics North America, Inc. | 4971 Golden Parkway | Buford, GA 30518 USA
Phone: +1 678 730 8190 | Fax: +1 770 932 2385 | info.ektu@elringklinger.com
www.elringklinger-engineered-plastics.com

ElringKlinger Engineered Plastics (Qingdao) Co., Ltd. | No. 101&201 Room, A2 Building 1000 Yuntai Shan Road
International Innovation Park | Sino German Ecopark Huangdao District | 266500 Qingdao V.R. China
Phone +86 532 6872 2830 | Fax +86 532 6872 2838 | info.ektq@elringklinger.com | www.elringklinger-ep.cn



DQS-certified according to IATF 16949:2016 (reg. no. 002504 IATF16) | DIN EN ISO 14001 (reg. no. 002504 UM)



DNV-GL-certified according to GMP for Equipment with Food Contact Surfaces (reg. no 201043-2016-FSMS-ITA-DNV)



DQS-MED-certified according to DIN EN ISO 13485:2012

elringklinger
Engineered Plastics

We make no claims as to the completeness of the information provided in this brochure, which is based upon many years of experience and knowledge. No liability is assumed for claims or damages that arise on the basis of this information. All parts must be installed by trained and specialized staff. © ElringKlinger Kunststofftechnik GmbH | 01/2021
* SUPER-300 type PILLAR fitting™ is a registered trademark of NIPPON PILLAR PACKING CO., LTD